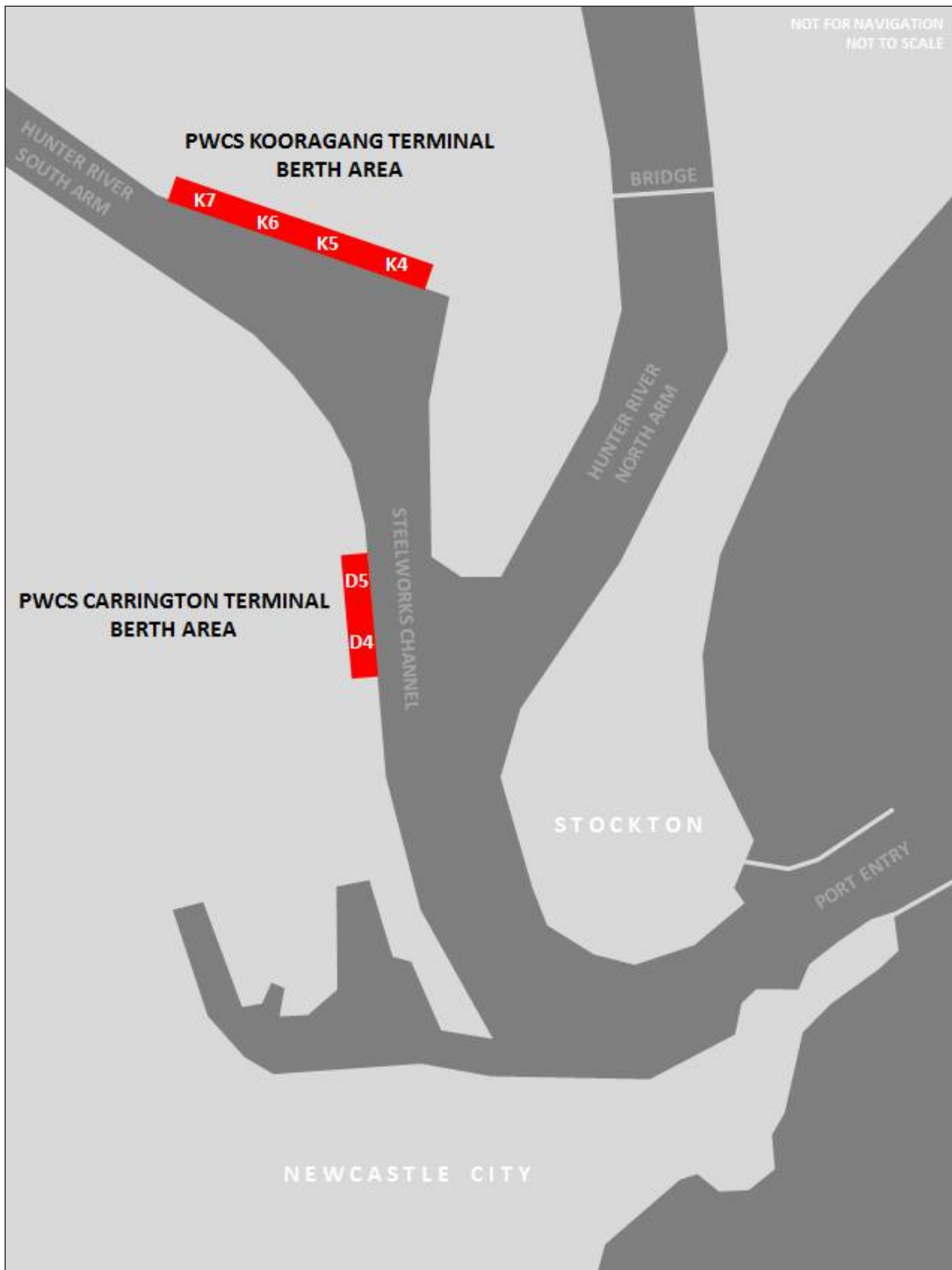


APPENDIX D: DRAWINGS

The following drawings are intended to compliment information contained in this Handbook. Refer to the relevant Handbook section for contextual information

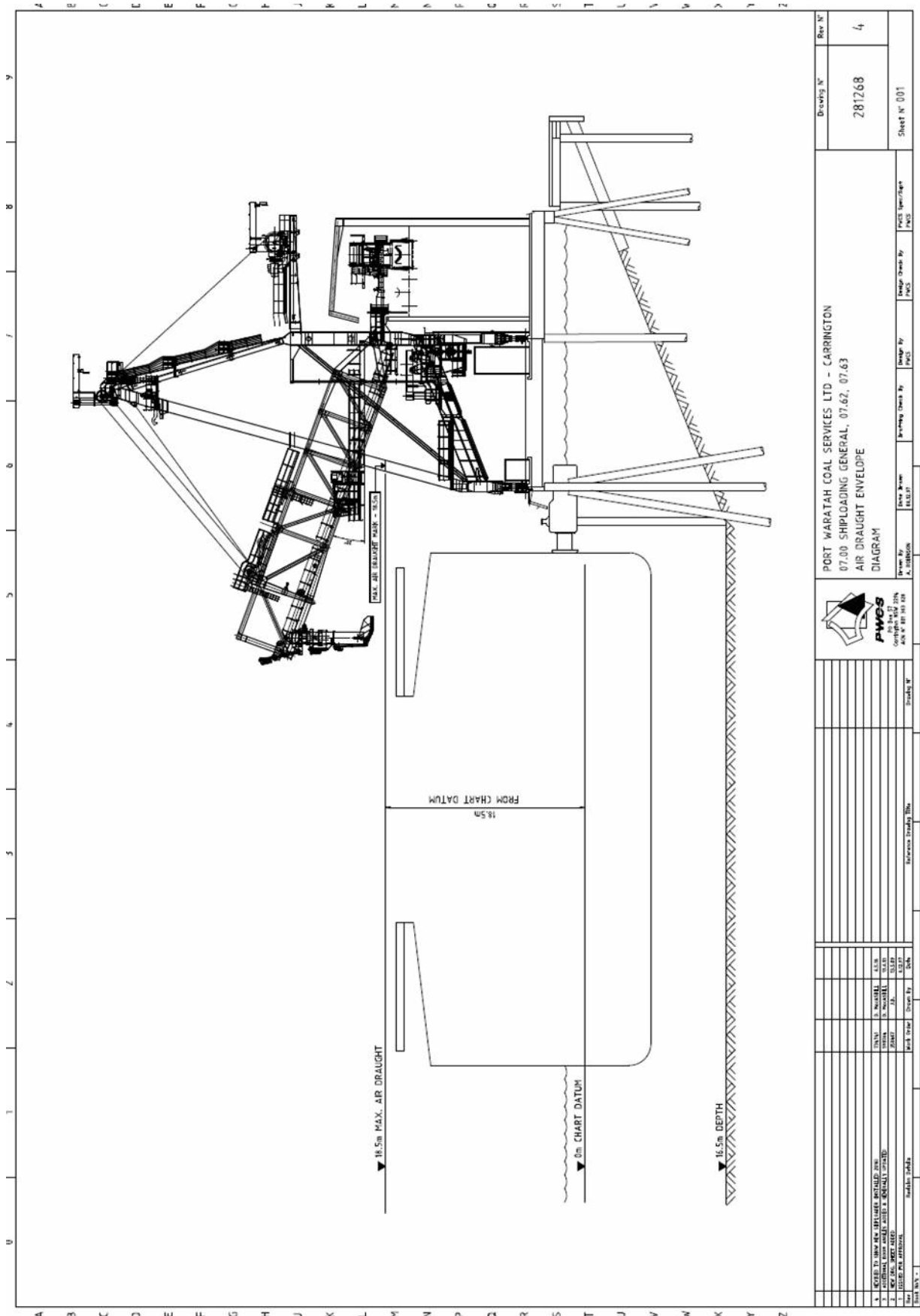
Item	Title	Drawing No.
D.1	Newcastle Port Map	N/A
D.2	Carrington Terminal Air Draught Elevation	281268 Rev 4
D.3	Carrington Terminal Wharf Plan	281269 Rev 6
D.4	Kooragang Terminal Air Draught Elevation	281275 Rev 4
D.5	Kooragang Terminal Wharf Plan	348950 Rev 8
D.6	Pictures of Common Issues	N/A

D.1: NEWCASTLE PORT MAP

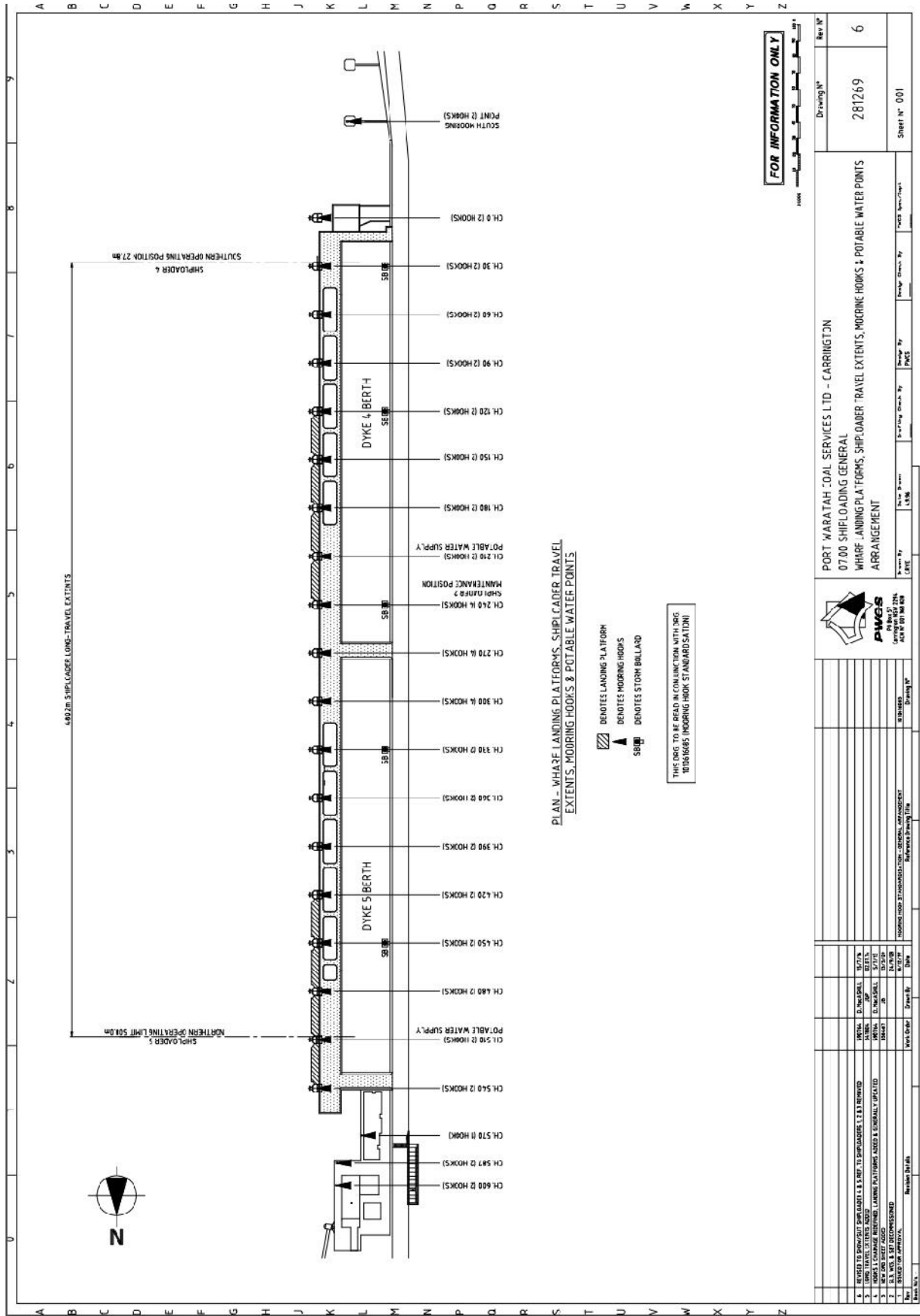


Note: Only PWCS terminals shown.

D.2: CARRINGTON TERMINAL AIR DRAUGHT ELEVATION

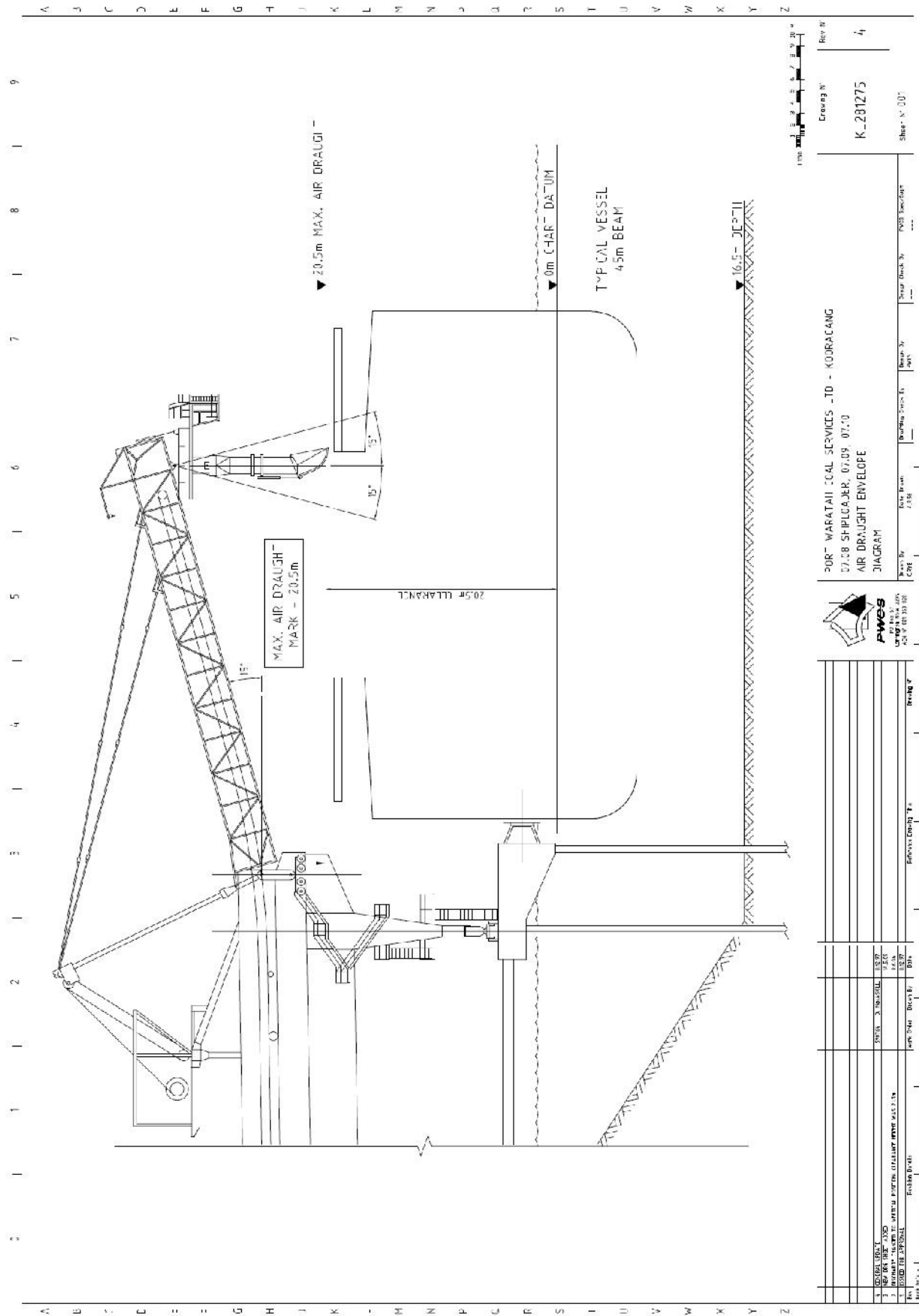


D.3: CARRINGTON TERMINAL WHARF PLAN

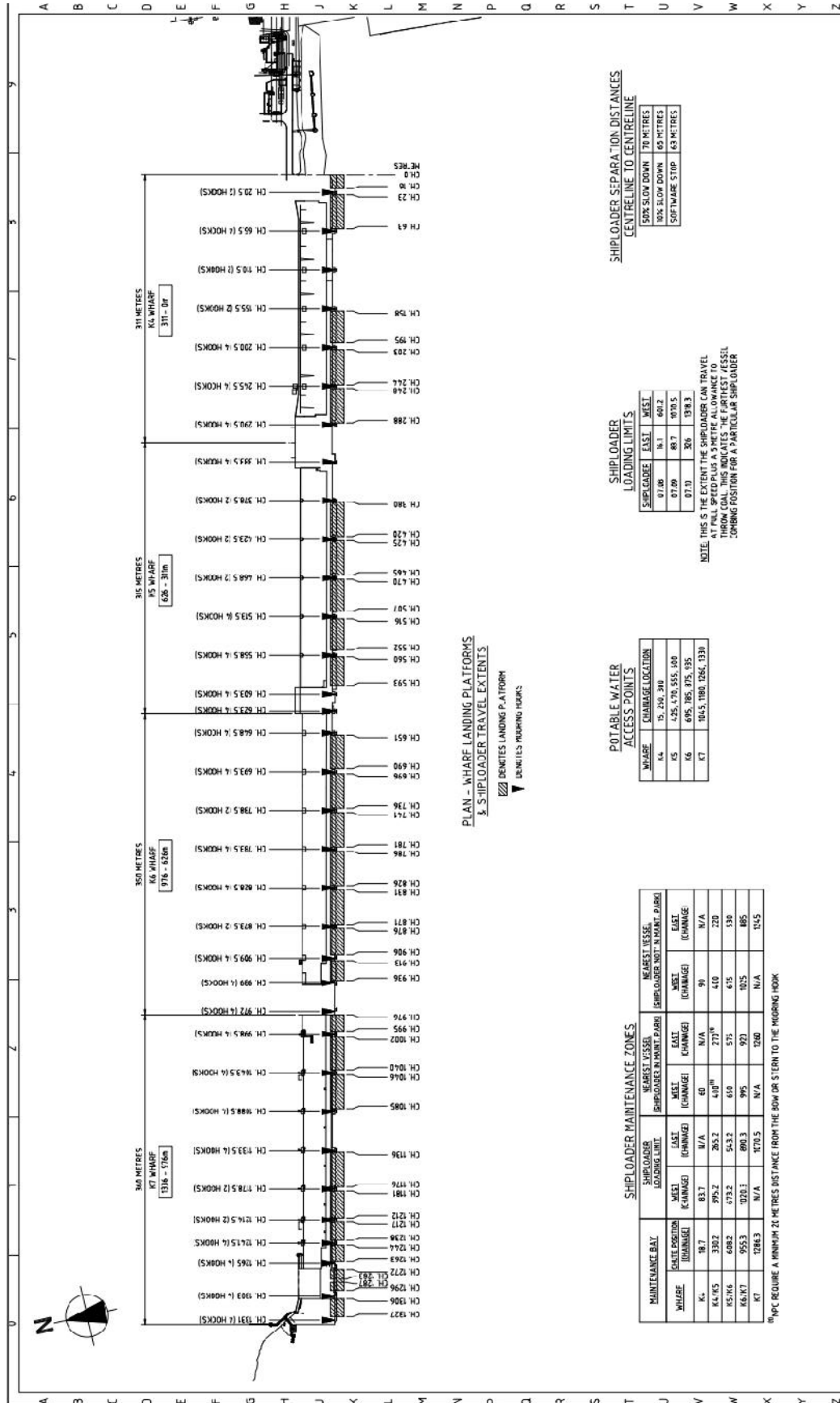


Drawing No		281269	Rev No	6
Sheet No		001	Sheet No	
PORT WARATAH COAL SERVICES LTD - CARRINGTON 0700 SHIFLOADING GENERAL WHARF LANDING PLATFORMS, SHIPLOADER TRAVEL EXTENTS, MOORING HOOKS & POTABLE WATER POINTS ARRANGEMENT				
Drawn By	Checked By	Design Date	Drawn Date	Design No
10/11/10	10/11/10	10/11/10	10/11/10	10/11/10
PROJECT NO: 1010616685 PROJECT NAME: WHARF LANDING PLATFORMS, SHIPLOADER TRAVEL EXTENTS, MOORING HOOKS & POTABLE WATER POINTS ARRANGEMENT PROJECT LOCATION: PORT WARATAH COAL SERVICES LTD - CARRINGTON				
PROJECT MANAGER: [Name] PROJECT ENGINEER: [Name] PROJECT SUPERVISOR: [Name]				
PROJECT START DATE: [Date] PROJECT END DATE: [Date]				

D.4: KOORAGANG TERMINAL AIR DRAUGHT ELEVATION



D.5: KOORAGANG TERMINAL WHARF PLAN



PLAN - WHARF LANDING PLATFORMS
 3. SHIPLOADER TRAVEL EXTENTS

▨ DENOTES LANDING PLATFORM
 ▼ DENOTES MOORING BERTH

WHARF	CRANE POSITION (HORIZONTAL)	SHIPLOADER LANDING LIMIT		NEAREST VESSEL		SHIPLOADER MAINT. PLANT. (PABO)		NEAREST VESSEL	
		WEST (CHANGE)	EAST (CHANGE)	WEST (CHANGE)	EAST (CHANGE)	WEST (CHANGE)	EAST (CHANGE)	WEST (CHANGE)	EAST (CHANGE)
K4	18.7	83.7	N/A	60	N/A	91	N/A	91	N/A
K4/K5	392.2	995.2	285.2	407.0	777.0	410	720	410	720
K5/K6	688.2	783.2	543.2	610	575	615	138	615	138
K6/K7	955.3	970.3	890.3	995	921	925	885	925	885
K7	1286.3	N/A	1170.5	N/A	1260	N/A	1145	1245	N/A

NOTE: REQUIRE A MINIMUM 21 METRES DISTANCE FROM THE BOW OR STERN TO THE MOORING BERTH

WHARF	CHANGE LOCATION	SHIPLOADER ACCESS POINTS	
		EAST	WEST
K4	75, 290, 290	401.2	401.2
K5	425, 470, 585, 608	85.7	1073.5
K7	695, 785, 875, 935	326	1318.3

NOTE: THIS IS THE EXTENT THE SHIPLOADER CAN TRAVEL ON THE PLATFORM AS SPECIFIED ALLOWANCE TO THE CRANE TRACKS. THIS DOES NOT TAKE INTO ACCOUNT THE TURNING POSITION FOR A PARTICULAR SHIPLOADER

SHIPLOADER	LOADING LIMITS	
	EAST	WEST
07.00	11.1	401.2
07.09	85.7	1073.5
07.10	326	1318.3

SHIPLOADER SEPARATION DISTANCES CENTRELINE TO CENTRELINE	CENTRELINE TO CENTRELINE	
	50% SLOW DOWN	70 METRES
100% SLOW DOWN	60 METRES	60 METRES
SOFTWARE STOP	63 METRES	63 METRES

INFORMATION ONLY

PORT WARATAH COAL SERVICES LTD - KOORAGANG
 07.14 WHARF K4, 07.15, 07.16, 07.17
 WHARF LANDING PLATFORMS & SHIPLOADER TRAVEL EXTENTS, MOORING BERTHS & POTABLE WATER POINTS
 GENERAL ARRANGEMENT

Rev. No. 8
 Drawing No. KL 34-8950

Sheet No. 001

Author: D. McLELLAN
 Designer: B. BELGER
 Checker: B. BELGER

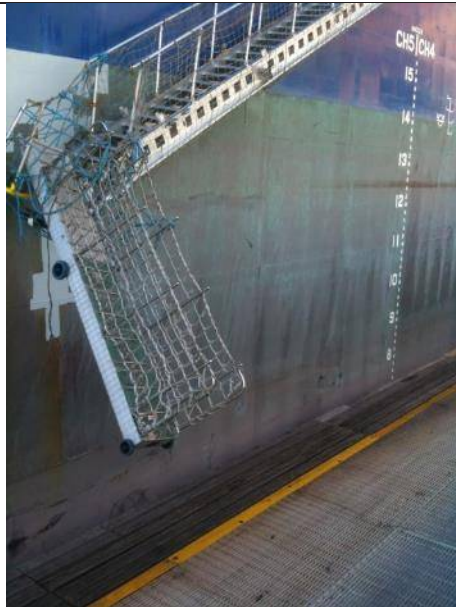
Scale: 1:500
 Reference Drawing Title: WHARF LANDING PLATFORMS & SHIPLOADER TRAVEL EXTENTS, MOORING BERTHS & POTABLE WATER POINTS

D.6: PICTURES OF COMMON ISSUES

Wharf timbers damaged by gangway
–adjust gangway regularly to allow for tide and loading.



Brow damaged or dropped in harbour.



Do not access close to shiploader legs – shiploader may move.

